



**CARE Bangladesh**  
RAOWA Complex (Level 7-8)  
VIP Road, Mohakhali, Dhaka-1206, Bangladesh.  
Office: +880-2-9889009, Fax: +880-2-9889041  
[www.carebangladesh.org](http://www.carebangladesh.org)  
[twitter.com/CAREBDesh](https://twitter.com/CAREBDesh)  
[facebook.com/CAREBangladeshOfficialPage](https://facebook.com/CAREBangladeshOfficialPage)

Photo: Kathleen Prior/CARE



**REFUGEE RESPONSE UPDATE**  
August 2017-March 2018



Photo: Nancy Farese/CARE

Since 25 August, more than **670,000+** people from Myanmar have crossed into Cox's Bazar, Bangladesh following violence in Myanmar's northern Rakhine State, making this exodus one of the fastest growing refugee

crises in the world. An estimated **880,000+** refugees are now in Cox's Bazar, the world's most densely populated refugee settlement. (25 Feb ISCG Report\*)



Most refugees left Myanmar empty-handed; and whatever meagre savings they had are already spent on transportation and arranging shelters that are often no more than bamboo and plastic sheets. Most people are extremely vulnerable and traumatized and solely dependent on humanitarian assistance. They need shelter, food, clothes, health services, water and sanitation and protection and more.

\*Situation Report: Rohingya Refugee, Crisis Cox's Bazar | 25 February 2018  
[https://www.humanitarianresponse.info/system/files/documents/files/180225\\_weeklyiscg\\_sitrep\\_final\\_2.pdf](https://www.humanitarianresponse.info/system/files/documents/files/180225_weeklyiscg_sitrep_final_2.pdf)

CARE was one of the earliest to hit the ground, offering critical humanitarian support to meet people's life-saving needs. To begin with, a Rapid Needs Assessment and a Rapid Gender Analysis were conducted that formed the basis of all interventions across different sectors.



Since September 2017, CARE has reached nearly **180,000** people through distribution of food and non-food items (NFI), shelter kits, hygiene and dignity kits, and services for health, protection and management of GBV (Gender-Based Violence). As part of a consortium, CARE also worked with more than **180,000** children with malnutrition.





By February 2019, CARE aims to reach out to a total of **250,000+** people, both refugees and host communities, inline with the new strategy.



CARE's fundraising target is **12 million USD** to meet the requirements until February 2019.



“The approach CARE takes to respond in any emergency is to focus particularly on women and girls. Whether they are menstruating, pregnant, breastfeeding, younger or simply older and more frail. They have specialized needs which require specialized solutions.”

– Zia Choudhury  
Country Director, CARE Bangladesh



# Health



Sexual, reproductive and maternal health services (SRMH), Emergency Obstetric Care (EmOC), family planning, immunization, child health, general consultation, clinical management and referral services for GBV survivors, free medicines, ambulance service and outreach.



**25,000+**  
**People treated**



**173,000+**  
**Targeted**





## Protection & GBV

Protection of women and girl refugees, including prevention and management of Gender-based Violence (GBV). Services include provision and referrals for critical and life-saving GBV services, psycho-social counseling, access to information and education, engaging men and boys in prevention strategies.



**Women Friendly Space (WFS)** Created with an average visit of **30+** women every day; so far **4000+** women have availed this service that helps:

- To offer private and confidential psycho-social counseling for the refugee women who experienced GBV and other forms of trauma.
- To help women socialize, spend quality time by means of interactive games and activities.
- To ensure referral support for day-to-day needs. For example, if required, women will be sent to hospitals with better, more specialist facilities outside the camps.



**Information booth** set up to meet various information needs of women and girls.

**Training sessions** conducted for CARE and partner NGO staff on counseling and providing psychosocial support, first aid (PFA) and prevention of sexual exploitation and abuse (PSEA).



**992**

counseling/discussion  
sessions held

**16**

watch groups formed

**193** women referred to  
different service-providers

**2306** households visited  
to inform and educate

# WASH

Prevent outbreak of waterborne diseases, ensure improved access to safe drinking water and sanitation facilities with better hygienic practices.

**30,500** people getting benefits of CARE's WASH interventions.

**27** deep tubewells installed (**41** planned) to ensure safe drinking water as many of the shallow wells, installed indiscriminately by others, are contaminated with e-coli, a direct result of having toilets close to wells



**2,090** HHs got water purifying tablets



**210** (**450** planned) latrines and hand-washing facilities built



**525** (**605** planned) women-friendly bathing spaces constructed

**327** household hygiene promotion sessions conducted



**5,700** HHs receiving hygiene kits (soap, shampoo, toothpaste, toothbrush, nail clipper, torch)



# Nutrition

Identification and treatment of children with severe acute malnutrition (SAM) and moderate acute malnutrition (MAM) through Community-based Management of Acute Malnutrition (CMAM) approach, along with capacity building and training of project and partner staff.

**16** Outpatient Therapeutic Program (OTP) Centers

**180,000+** children screened

**11,181** children with SAM enrolled at OTPs

**48,034** children with MAM identified and referred to other centers

**92.6%** cure rate



Photo: Kathleen Piro/CARE

# Site Coordination

Camp name: Potibunia (AKA Moynarghona / Shafiullah Kata)

Inter-agency coordination, avoiding duplication of required services, identification of existing gaps in services, site improvement such as building / renovating infrastructure like roads within and between camps, garbage management, preparation of household data base, collection of list of beneficiary and community leaders (Majhi).

**22,000+** people getting better and coordinated multi-sectoral support

**07** information centers set up

**15** camp coordination and 50 block coordination meeting conducted

**777** community meeting conducted (with 42% female participation)

**348** FGD conducted to track service gaps and challenges



# Shelter + NFIs

Provision of emergency shelter and non-food items (NFIs), training and demonstrating shelter-building technical skills, upgrading existing shelters, and supporting more resilient shelters for monsoon and cyclone season.



**22,000** people receiving shelters kits (tarp, mat, rope, kitchen set), toolbox to build/renovate shelters and training on how to build better and stronger shelters to withstand heavy rains and landslides. CARE is also focusing on upgrading shelters and improving living conditions given the upcoming monsoon season.

**4,600** people/family received rice bowl and umbrella.

# Food Security

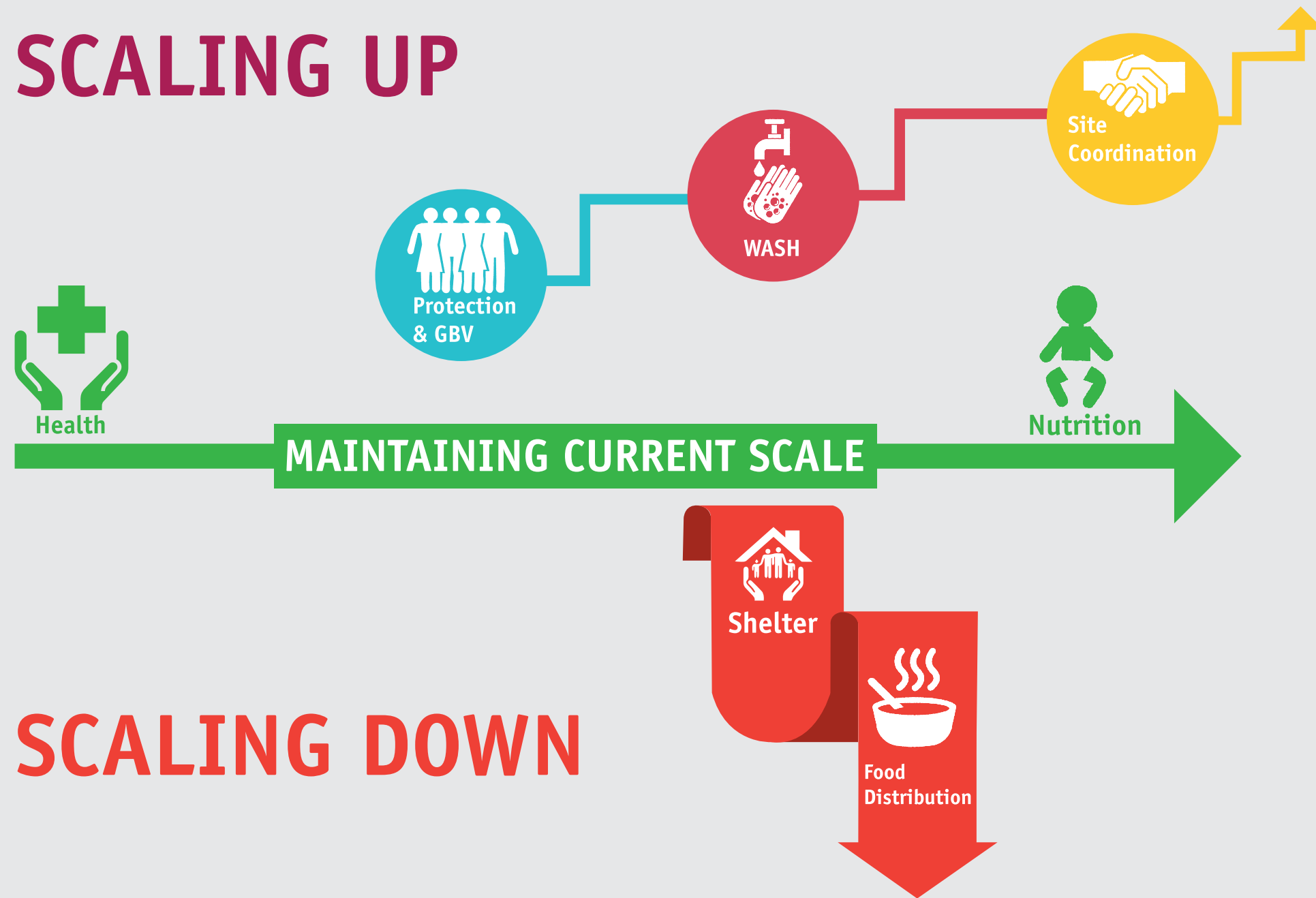
Provision of food to vulnerable new arrivals. Nearly

**106,100** individuals received dry food items (rice, potato, pulse, oil, onion, sugar, salt)

**18,250+** people got cooked food.



# SCALING UP



# SCALING DOWN



# THANK YOU

## Our Donors

Australian Humanitarian Partnership; Department of Foreign Affairs and Trade, Australia; Disasters Emergency Committee, UK; Dutch Ministry of Foreign Affairs; Dutch Relief Alliance; GlaxoSmithKline; Global Affairs Canada; International Organization for Migration; LDS Charities; Ministry of Foreign Affairs, Luxembourg; Ministry of Foreign Affairs, Taiwan; SAFPAC; UNICEF and generous support from CARE supporters globally.

## Our National Partners

COAST Trust; Concern Worldwide; Family Development Services & Research; Oxfam Bangladesh; Prottiyashi; PULSE; Resource Integration Centre.

Special thanks to the Government of the People's Republic of Bangladesh for support, cooperation and encouragement.